



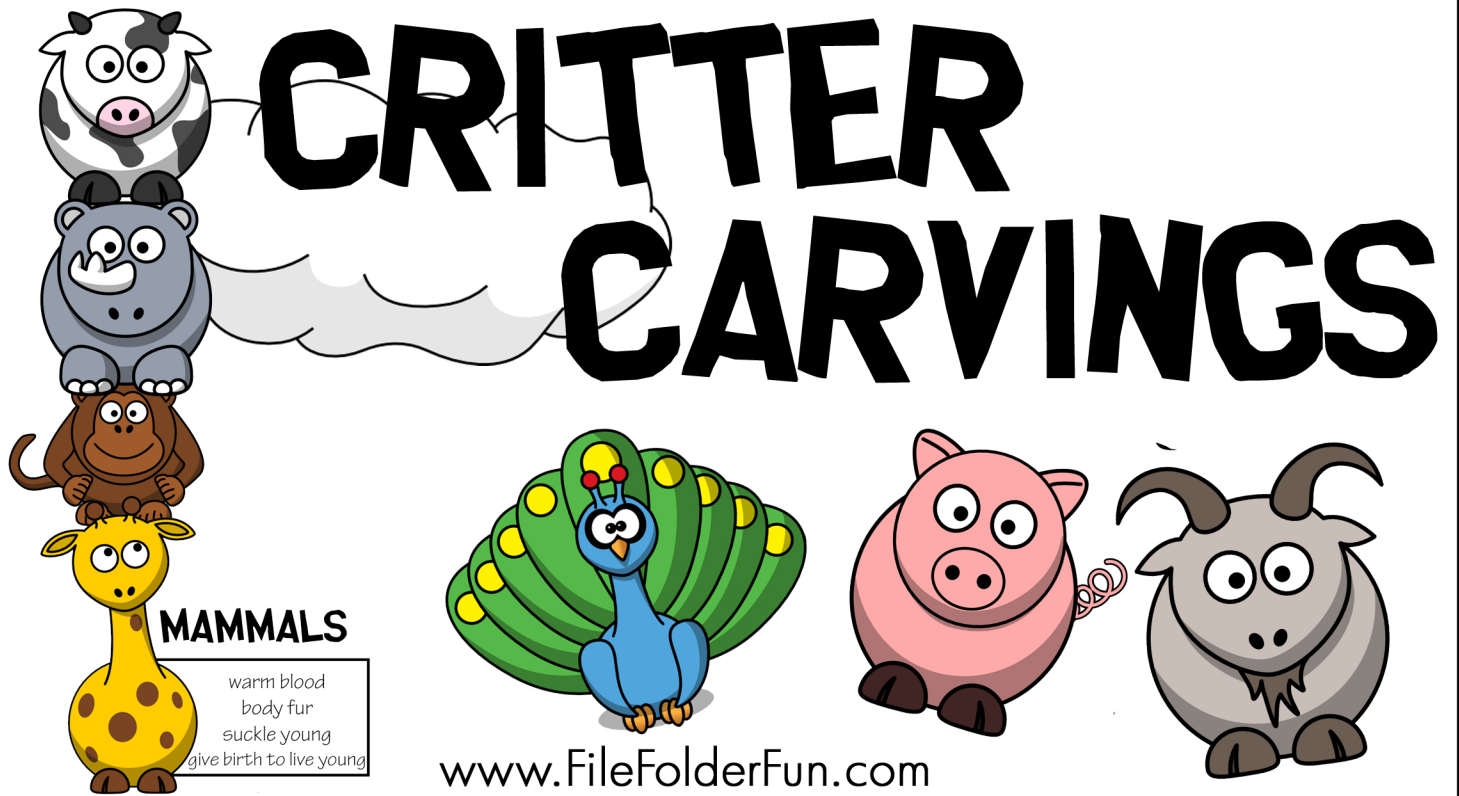
[Member Area](#) | [BLOG](#) | [Facebook](#) | [Pinterest](#) | [Google+](#)

Thank you for downloading! [Subscribe](#) for exclusive teaching resources!

Find more free games below:



Contents of this download are not to be stored in any sort of file sharing system or printed in mass quantity. Images hold full copyright and are not to be manipulated or altered in any way. www.FileFolderFun.com Images © Clipart.com

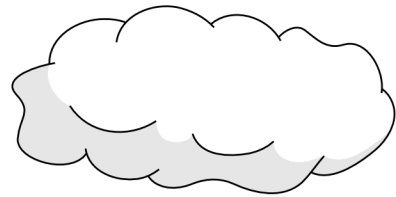
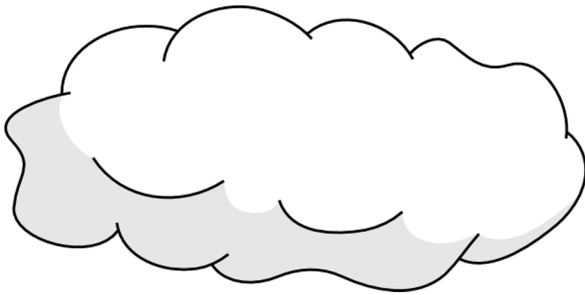
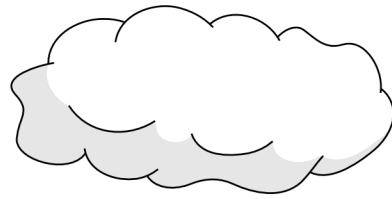


Images (c) Jupiter co.

Instructions: Mount animal categories to file folder. You will need to glue two file folders together for all five categories. Play: Help the animals find their group. Stack them one on top of another to make a tall totem pole. When your done, have your work checked off and stack some silly animals on top of the children.

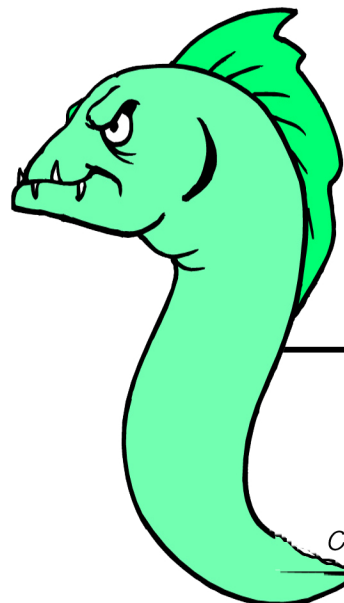
Critter Carvings





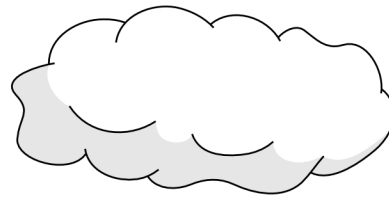
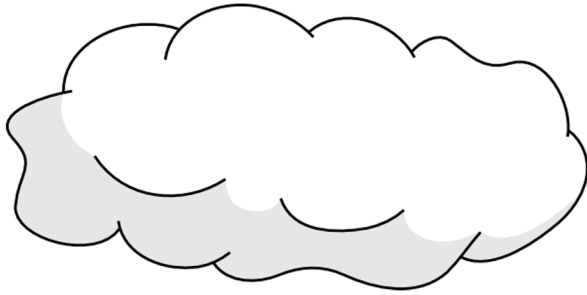
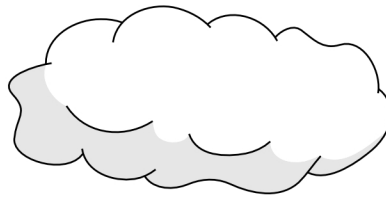
REPTILES

cold blood
usually have scales
lay eggs.



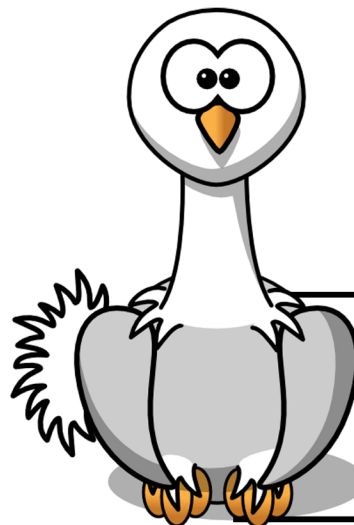
FISH

cold blooded
have scales
lay eggs
cannot breath air



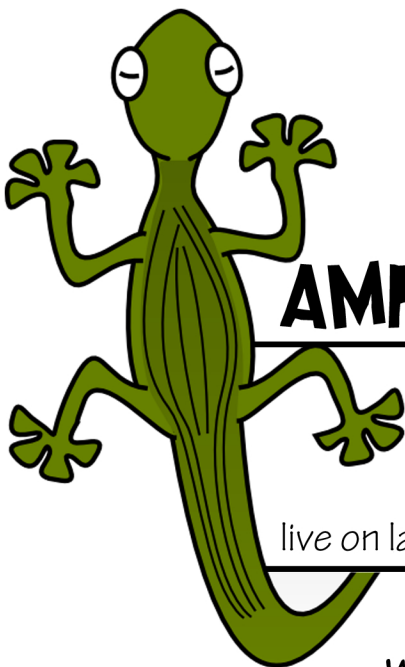
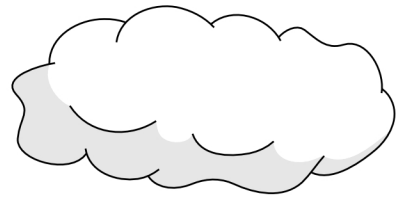
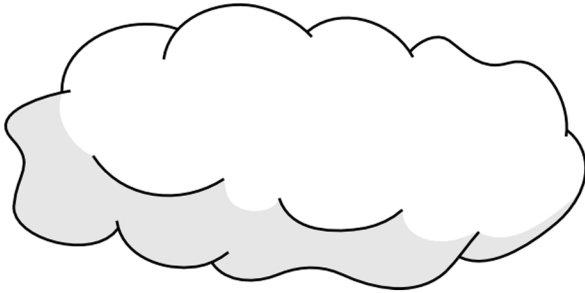
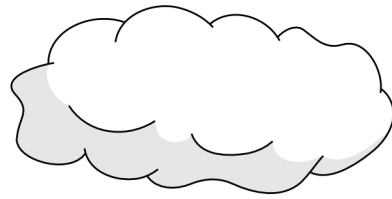
MAMMALS

warm blood
body fur
suckle young
give birth to live young



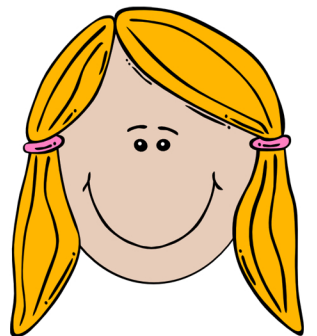
BIRDS

warm blooded
have feathers
lay eggs
most can fly



AMPHIBIANS

cold blooded
moist skin
lay eggs
live on land and water



BUILD YOUR OWN!

Have fun making your own
Silly Animal Totem Pole!

